

Display Solutions

crystal clear
display solutions

Changes for the Better



XD600U

Ultra Bright Projector, 3D Ready



- **Stand-by Mode under 1W**

Stand-by (low) mode power consumption is less than 1W*, offering increased energy savings and further contributing to environmental preservation.

* Stand-by mode with network turned off, 3W in normal mode with network turned on.

- **4500 ANSI lumens of brightness.**

The XD600U features a high brightness of 4500 ANSI lumens, enabling the reproduction of richer and vibrant images.

- **Long Lamp Life**

The XD600U benefits from 5000 hours of lamp life which reduces maintenance and cost of ownership.

- **Filter-free**

DLP™ projectors are structurally airtight, eliminating the need for an intake filter under normal conditions, and lowering costs.

- **Silent application**

Operating at just 29dBA the XD600U is virtually silent, for distraction free presentations.



4500 ANSI Lumens
2000:1 Contrast ratio
Stand by mode 1W
10W Speaker
3D Ready



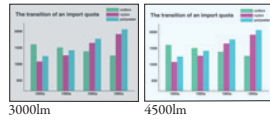
MOBILE XGA PROJECTOR
XD600U

Brilliant Color™	Color Enhancer	Wall Screen	10W Speaker	User Logo Projection	Password Lock	Instant Shutdown	Picture Performance
Long-life Lamp	Low Stand-by Power	Top/Side Loading Lamp	LAN (RJ-45)	HDMI	Closed Caption	Low Fan Noise	Presentation
							User-friendly

Other Special Features

■ **High brightness 4500lm and high contrast 2000:1**

A high brightness and a high contrast level for presentations in large meeting rooms and conference halls.



■ **Top-loading lamp for easier maintenance**

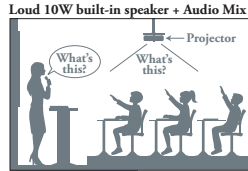
The projection lamp is installed in the upper section of the main body. Whether sitting on a shelf or suspended from the ceiling, lamp replacement is simple and easy*, and there's never a need to move the whole projector.



*A lamp replacement attachment is included to prevent the lamp from being dropped during replacement.

■ **Loud 10W built-in speaker**

A high-volume, 10W speaker is built-in, eliminating the need for an external speaker.



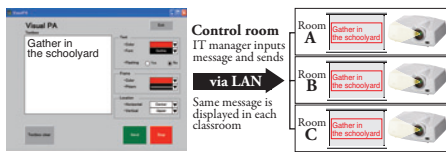
■ **Microphone capability with mixing input audio source**

Using the "Audio Mix" feature and wireless microphone sold separately, the presenter's voice is reproduced loud and clear in real-time.

*Only compatible with stereo mini-jack. Not compatible with RCA jack (L/R) or HDMI.

■ **Visual PA broadcasting of various written messages**

Using a control room computer equipped with projector-control software, simultaneously send messages (up to 350 characters long) in real-time to projectors connected to the LAN. Ideal for broadcasting important information to multiple rooms in schools or office buildings.



■ **3D READY – Enjoy the future today**

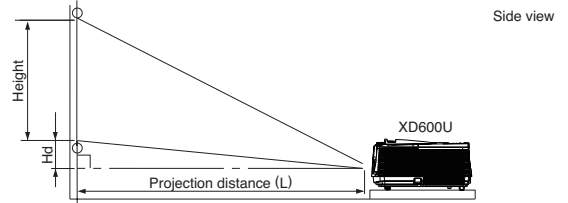
Experience the impact and allure of 3D images. The 3D video content must be in field sequential format and special electronic shutter glasses are required.

Specifications

Model	XD600U
Display technology	0.7" 1-chip DMD
Resolution	1024 x 768 (total 786,432 pixels)
Brightness	4500lm
Contrast ratio	2000 : 1
Picture size	40" - 300"
Throw ratio	1.4 - 2.1
Source lamp	230W (shut-off time 5000hr) in low mode, 280W (shut-off time 3000hr) in standard mode
PC compatibility	640 x 480 - 1280 x 1024, True : 1024 x 768, sync on green available
Video compatibility	NTSC / NTSC 4.43 / PAL (including PAL-M, N) / SECAM / PAL-60 Component video; 480i/p (525i/p), 576i/p (625i/p), 720p (750p), 1080i (1125i 60Hz), 1080i (1125i 50Hz)
Input terminals	RGB; mini D-sub 15pin x 2 Video; RCA x 1, S-VIDEO x 1 Digital; HDMI x 1 Audio; stereo mini jack (ø3.5mm) x 2, RCA jack (L/R) x 1
Output terminals	RGB; mini D-sub 15pin x 1 Audio; stereo mini jack (ø3.5mm) x 1
Communication terminal	RS-232C; mini DIN 8pin x 1, LAN; RJ-45 x 1
Audio speaker	10W mono
Dimensions (W x H x D)	345 x 129 x 270 mm / 13.6 x 5.1 x 10.6 inch
Weight	3.6kg / 7.9lbs
Power requirements	AC 100-240V, 50/60Hz
Optional lamp	VLT-XD600LP

• Compliance with ISO21118-2005
• All brand names and product names are trademarks, registered trademarks or trade names of their respective holders

Screen Size and Projection Distance

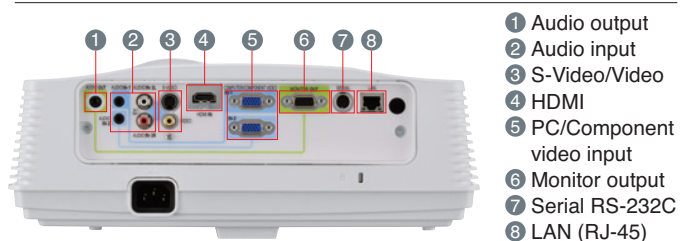


Screen size chart (4:3 aspect ratio)

Screen		Distance from screen (L)				Height projected image (Hd)					
Diagonal size	Width (W)	Height (H)	Shortest (Wide)	Longest (Tele)	inch	cm					
40	102	32	81	24	61	45	1.1	67	1.7	3.6	9
60	152	48	122	36	91	68	1.7	102	2.6	5.4	14
80	203	64	163	48	122	91	2.3	137	3.5	7.2	18
100	254	80	203	60	152	115	2.9	171	4.3	9.0	23
150	381	120	305	90	229	173	4.4	258	6.5	13.5	34
200	508	160	406	120	305	231	5.9	344	8.7	18.0	46
250	635	200	508	150	381	289	7.3	431	10.9	22.5	57
300	762	240	610	180	457	348	8.8	517	13.1	27.0	69

The above numbers are approximate, and may be slightly different from the actual measurements.

Input and Output Terminals



New publication, effective October 2009 Specifications subject to change without notice.