

NM-C150SD

PTZ Dome with 18x Optical Zoom Optimum Levels of Surveillance

The NM-C150SD speed dome network camera features an 18 X optical zoom (12 X digital zoom) with True Night Shot function supporting up to D1 resolution at 25fps with MPEG-4 compatibility for exceptional monitoring with crystal-clear image reproduction.

This network-ready camera pans 360 degrees, has a 90-degree tilt capability, and is fully equipped with essential surveillance functions such as 80 programmable preset positions and 8 auto scans.

Day or night, and even in the most demanding operating conditions, NM-C150SD is on guard answering your surveillance needs.



25 fps

**Full frame rate up to 25fps at
D1 resolution**

The NM-C130FD is a high-resolution network camera that supports a full frame rate up to D1 (25fps @ 720 x 576) resolution and offers a horizontal resolution of more than 540 TV lines to guarantee the ultimate in image quality.

18X optical zoom

**18 X optical zoom and
360-degree continuous rotation
at 380-degree/sec. rotation speed**

The NM-C150SD has a built-in 18 X optical zoom and 12 X digital zoom with a True Night Shot function that ensures outstanding performance day or night. What's more, the camera can be rotated 360 degrees and tilted up to 90 degrees in high-speed to quickly achieve the optimum viewing angle

MPEG-4

**Compatible with
MPEG-4 standard**

The NM-C150SD is MPEG-4 compatible, which assures significant compression of monitored data for safe and secure transmission with less bandwidth.

Net Hunter IP

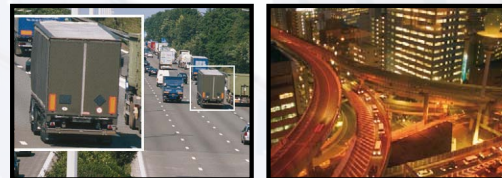
**Single-server
video system**

Net Hunter IP is an essential single-server video system managing IP cameras, NVRs and Mitsubishi DVRs that include fully featured remote access.

■ Superior image quality

■ Day and night mode

Intelligent selectable switching ICR (Infrared Cut Filter) for top performance day or night.



■ 18 X optical zoom, 12 X digital zoom



NM-C150SD

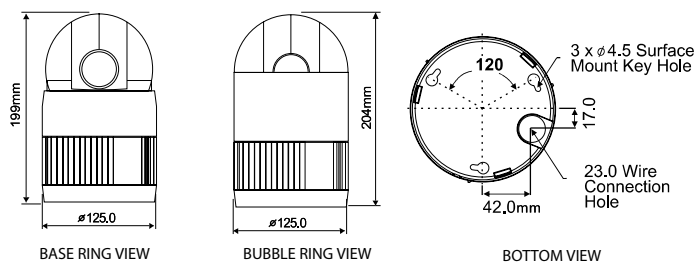
Other features

- 80 programmable preset positions
- 8 tours including preset, auto scan, and other tours can be programmed with over 300 functions and preset locations. During operation, each preset scan can be monitored in the smooth vector scan mode.
- 8 auto scans including vector scan and 1 endless auto-scan
- 8 privacy zones
- 2 alarm IN/1 auxiliary OUT (NC & NO)
- Variable speed from 0.1°/sec to 90°/sec
- Pan/tilt speed: proportional to the zoom ratio; max. speed 380°/sec at preset command
- Programmable user preferences: alarm, preset, title, etc.
- Up to 999 selectable camera addresses (setup using PC software)
- Built-in RS-485 receiver driver
- Built-in power-line surge protection and lightning protection
- Built-in network interface (10 Base-T/100 Base-TX) for remote monitoring by PC
- Interface protocol: TCP/IP, HTTP, UDP, DHCP, RTP, RTSP, SMTP, DDNS
- Clear bubble with black liner (shelter) for concealing the camera
- Motion detection - detects any motion by measuring change in speed of an object

Specifications

Item	Description	
CAMERA	Image sensor	1/4" Sony Ex-view HAD colour CCD
	Picture element	752 x 582; approx. 440K pixels
	Horizontal resolution	470 lines
	Lens	18x optical zoom with auto focus 12x digital zoom F1.4 to F3.0, f=4.1mm to 73.8mm
	View angle	Approx. 48° (WIDE end); 2.7° (TELE end)
	Minimum illumination	0.7 lux (F1.4 normal shutter speed) 0.05 lux (F1.4, 1/3s) 0.02 lux (1/4s without IR cut filter)
NETWORK	Display resolution	D1 (720 x 576), 640 x 480, 320 x 240, 160 x 120
	Maximum frame rate	25fps @ 720 x 576
	Video compression	MPEG-4 SP and ASP
	Audio compression format, I/O terminal	PCM, Full duplex, 16/8 kbps, 3.5mm Mic in x1 and speaker out x1
	External alarm I/O terminal	Alarm in x2, Alarm out x1
	Alarm and event management	Built-in motion detection, adjustable sensitivity and dwelling time, emailing
	Protocols	TCP/IP, UDP, HTTP, RTP, RTSP, DHCP, SMTP, DDNS
	Ethernet	10 Base-T/100 Base-T (RJ-45)
	Image settings	Color, brightness, contrast
	Minimum system requirements	Microsoft® Windows® 2000/XP, Intel® Pentium® IV 2.0GHz or higher, 512MB or more
Web browser	Microsoft Internet Explorer version 6.0 or higher	
ELECTRICAL	Power source	DC 12V
	Power consumption	Max. 12.0W
	Alarm input	x2

Dimensions



Item	Description	
ELECTRICAL	Alarm output	1 normal relay 24VDC/1A max. (electable NC/NO)
	Control	RS-485 baud rate: 2400 — 230k bps (default: 9600bps)
	Access time	0.75 second maximum preset recall time
	ID (camera address)	999 (factory mode selectable over 999 cameras)
MECHANICAL	Dimensions	125.0mm diameter x 204mm
	Weight	Approx. 1.2kg
	Panning angle	360° continuous rotation
	Speed	0.1° to 90°/sec. (proportional to zoom) Preset speed: 380°/sec.
	Repeatability	0.2°
	Flip	Rotate 180° at bottom of tilt
	Autoscan	8 auto scans include vector scan
ENVIRONMENT	Preset position	80 positions with camera status (16-character title)
	Tour	8 tours
	On-screen display	Displays camera ID and area number on screen
	Operating temperature	0°C to 50°C
	Operating humidity	0 to 90% RH (non-condensing)
	Storage temperature	-20°C to 60°C
	Package	NM-C150SD Bubble Ring I/O Cable Assembly Screw (for Attaching NM-C150SD) Plate Adapter Plastic Anchor Binder Manual CD-ROM with IP Setting Utility Quick Installation

Microsoft® and Windows® are either registered trademarks or trademarks of Microsoft corporation in the United States and/or other countries. Intel is a trademark of Intel corporation in the U.S. and other countries. All other brand of product names may be trademarks and/or registered trademarks of their respective owners.

 **MITSUBISHI ELECTRIC EUROPE**

New publication, effective August 2010 Specifications subject to change without notice.