

# Stewart Shades

---

Stewart Shades are designed to meet the outside-light-control requirements of every room in your home



# Stewart Shades

Stewart Filmscreen is pleased to introduce a complete family of custom motorized window shading products designed to meet the outside-light-control requirements of every room in your home.

As the world's leading manufacturer of superior quality cinema projection screens, no one knows the importance of light control better than Stewart.

The **Blackout Shade** provides complete light blocking performance, utilizing the finest quality fabrics in a wide variety of deep, rich colors and your choice of textures. When combined with our custom Light Lock channels, you can be assured of total privacy as well. Automation options also provide opportunities for advanced security measures no other product can duplicate!

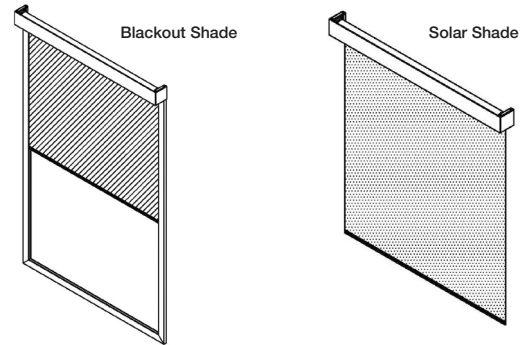
The **Solar Shade** employs the latest in beautiful technical fabrics from 3G Mermet. Solar shading offers not only attractive and convenient solutions for light and glare control issues, but effective reduction (up to 99%) of incoming UV rays. Now you can protect your valuable furniture, flooring and artwork from harmful effects of the sun, while still retaining your visual connection with the outside world.

With a little imagination, Stewart motorized roller shade systems can be designed to tackle a variety of technical, decorative, or design issues. And Stewart quality fits in any room, not just in your home cinema.

Stewart shading products are engineered to be simple to install, easy to operate, and pleasing to look at. Stewart shades are easy on the ears, using the latest in whisper-quiet motor technology from Lutron and our own Legacy 120v. Headbox pockets are available for recessing your Stewart shade system into the ceiling, and our engineers will tackle virtually any installation dilemma.

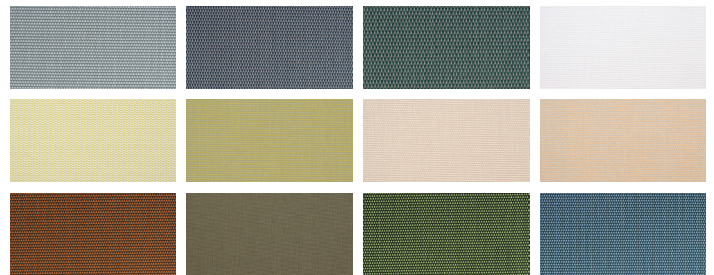
Stewart shading systems are built to virtually any control specification. From the basic hard-wired wall switch to IR, RF, RS 232 all the way to the latest Z Wave interface, we've got you covered.

Complete outside light control. Security. Comfort. Convenience. With quality Stewart window shading systems, you get it all.

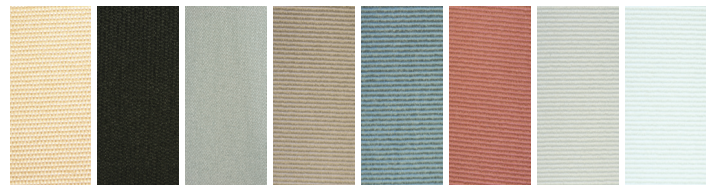


## COLORS AND FABRICS

### Solar Shades (more colors available)



### Blackout Shades (more colors available)



## CONTROLS



### Easy Operation

As the day goes on, the amount of light that enters a given window changes continually. Use the convenient remote control to adjust shades individually or as a group.

**Stewart**  
FILMSCREEN

RESIDENTIAL

Find your local representative at [www.stewartfilmscreen.com/rebs](http://www.stewartfilmscreen.com/rebs)

1161 Sepulveda Blvd Torrance CA 90502 USA 800.762.4999 | Tel: 310.784.5300 | Fax: 310.326.6870 | Email: [sales@stewartfilm.com](mailto:sales@stewartfilm.com) | [www.stewartfilmscreen.com](http://www.stewartfilmscreen.com)  
© Stewart Filmscreen Corporation, specifications are subject to change without notice.